

Anti-NKG2D hIgG1 Antibody(A49MI)

Product information

GM-52535AB-10	10 µg
GM-52535AB-100	100 µg
GM-52535AB-1000	1 mg

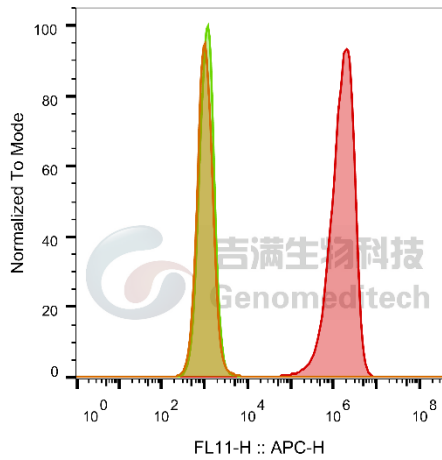
Antibody Information

Species Reactivity	Human; Cynomolgus;
Clone	A49MI
Source/Isotype	Monoclonal human IgG1, κ
Application	Flow cytometry;
Other Names	CD314, D12S2489E, KLR, NKG2-D, KLRK1
Gene ID	P26718-1 (human); P61252-1 (Cynomolgus)
Storage	Store at 2-8°C short term (1-2 weeks).Store at ≤ -20°C long term. Avoid repeated freeze-thaw.
Formulation	Phosphate-buffered solution, pH 7.2.
Endotoxin	< 1 EU/mg, determined by LAL gel clotting assay

Data Examples

Flow cytometry

H_NKG2D HEK-293 Cell Line (Catalog # GM-C27816) was stained with Anti-NKG2D hIgG1 Antibody(A49MI) or isotype control antibody.

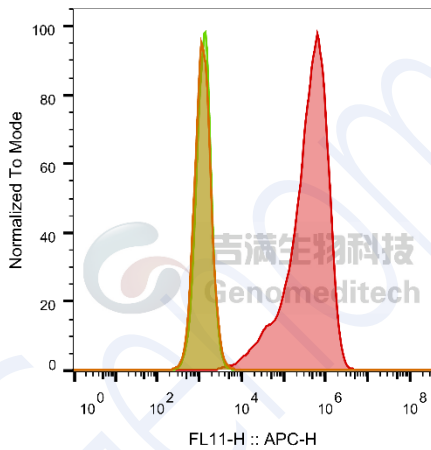


SampleID	Geometric Mean : FL11-H
HEK-293 anti-NKG2D+APC-2nd Ab	1043
HEK-293 H_NKG2D H_IgG+APC-2nd Ab	1141
HEK-293 H_NKG2D anti-NKG2D+APC-2nd Ab	1.50E6

Fig. FACS

Flow cytometry

Cynomolgus_NKG2D CHO-K1 Cell Line (Catalog # GM-C27820) was stained with Anti-NKG2D hIgG1 Antibody(A49MI) or isotype control antibody.



SampleID	Geometric Mean : FL11-H
CHO-K1 anti-NKG2D+APC-2nd Ab	1228
CHO-K1 Cyno_NKG2D H_IgG+APC-2nd Ab	1274
CHO-K1 Cyno_NKG2D anti-NKG2D+APC-2nd Ab	353138

Fig. FACS